



Front Splitter Installation Guide

This guide was made during the installation of our 2018+ Ford Mustang GT Performance Package Front Splitter. This guide is meant to be a general outline and will serve as an example for any of our LVA front splitter installations. Please read the **ENTIRE** guide prior to attempting installation.



Disclaimer: Modification of vehicles, through the use or misuse or improper installation of LVA products can lead to vehicle malfunction causing serious risk. Risks include but are not limited to vehicle damage, serious physical injury, disability and/or death. You are responsible for any modifications you perform on your or anyone else's vehicle using LVA products. LVA is not responsible and will not be held liable for any modifications done to vehicles, through the use or misuse of its product. Professional installation is **HIGHLY** recommended if you have little to no experience installing a front splitter. Any vehicle regularly traveling at "track-speeds" must chassis-mount their front splitter for optimal downforce and safety. This guide will show the most common installation method, the belly-pan mount.

Installation Tools & Hardware



Installing your LVA Front Splitter can be done using a few common tools. To successfully and safely install one of our Front Splitters, you will need a 1/4 inch drill bit, 5/32 “allen-key”, and an 11mm closed/open ended wrench or socket. We recommend a socket wrench for ease of use, and having a friend nearby.

Every LVA Front Splitter will come with an included “Splitter Hardware Kit” consisting of (12) Stainless Steel Button Head Allen Bolts, (12) Stainless Steel Finishing Cup Washers, (12) Stainless Steel Flat Washers, and (12) Stainless Steel Nylon Insert Lock Nuts.

Step 1: Bumper/Belly-Pan Removal

First, remove the vehicle's front bumper. Consult a reputable source such as a forum/YouTube video for detailed instructions on removing your ride's front bumper and belly-pan! We've included links to some of our customer's most popular models:

- 2015-2017 Ford Mustang
 - <https://www.youtube.com/watch?v=wcBiwlXKXMc>
- 2018-2019 Ford Mustang
 - <https://www.youtube.com/watch?v=w2IvaPePweE>
- 5th Generation Chevrolet Camaro
 - <https://www.youtube.com/watch?v=QEJPixlyuaA>

Step 2: Place Splitter on Flat Surface



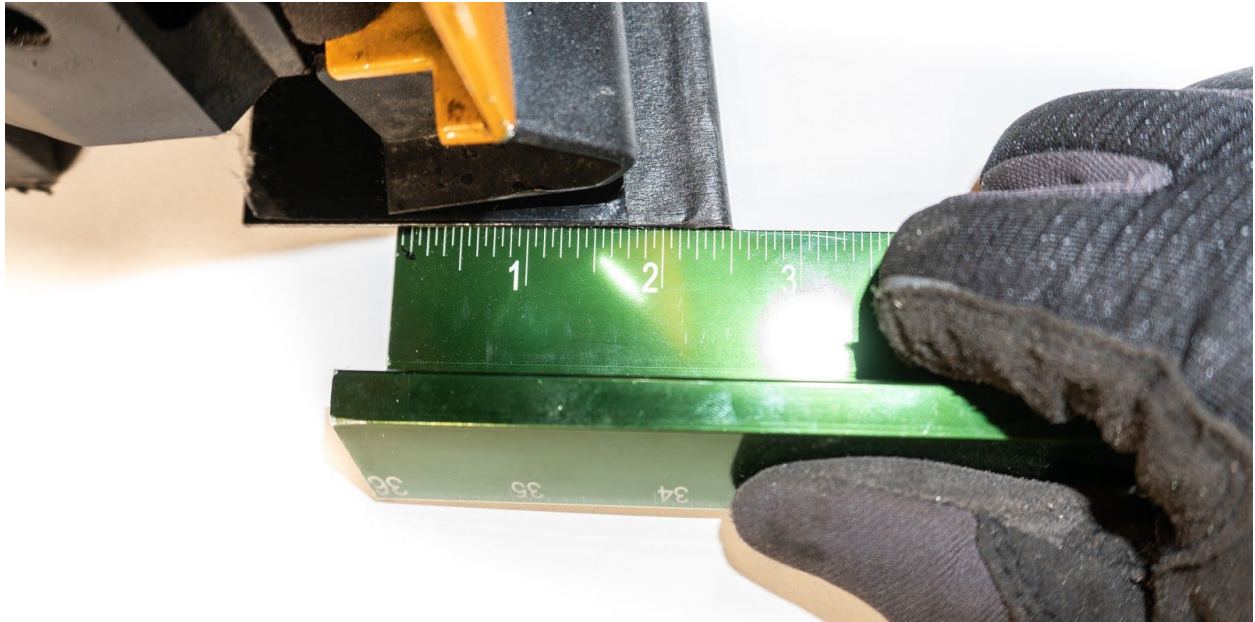
IMPORTANT: Leave the protective film on until stated otherwise.

Step 3: Place Bumper on Splitter



Align both ends of the bumper flush against the back of the splitter, as shown in the photo above.

Step 4: Measure, Measure, Measure



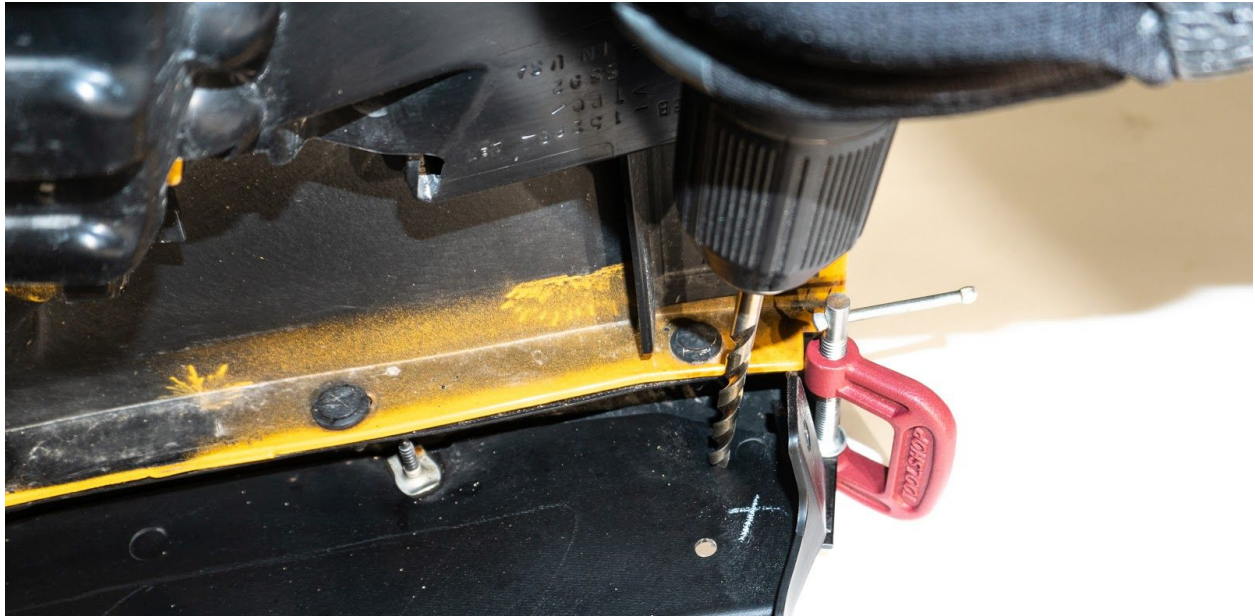
After aligning the bumper flush against the back of the splitter, measure both sides along the back most edge to center the bumper. The splitter should protrude the EXACT same amount on both the driver's and passenger's sides. You may want to ask for assistance during this process to minimize scratching on the splitter.

Step 5: Lock the Position

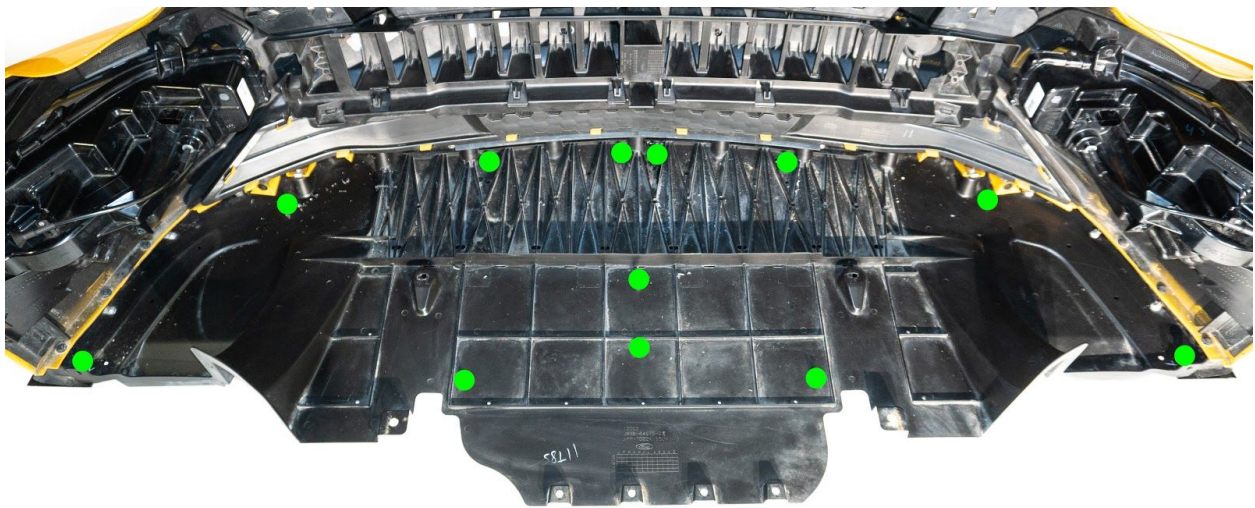


This can be done using a few different tools. We prefer the “C-Clamp” method (shown above). However, vice grips or good ol’ tape will work as well. The goal is to hold the splitter in place during the upcoming drilling process. You may want to ask for assistance during this step.

Step 6: Begin Drilling!



Utilizing the ¼ inch drill bit, drill through the factory belly-pan and LVA splitter. Start with one hole on each side located near your clamping device. These holes will ensure that the splitter stays in place throughout the rest of the installation.



Each LVA front splitter comes with 12 sets of splitter hardware. We suggest repeating Step 6 for all of the “green-dot” locations shown above. We strongly urge our customers to place an emphasis on mounting a significant percentage of their mounting hardware as close to the “front-edge” of the bumper as possible.

Step 7: Remove Bumper from Splitter & Peel Film



After drilling all 12 of your hardware holes through both the OEM belly-pan and front splitter, remove the bumper from the splitter. At this time, peel the protective film from BOTH sides of the splitter.

IMPORTANT: *There is a higher risk of scratching/marring post film removal. Take extra care when handling the splitter/bumper from this point on. The last thing you want is a scuffed splitter when you reassemble your baby's front end!*

Step 8: Inserting/Tightening Splitter Hardware

IMPORTANT: *It is strongly recommended to use some sort of lubricant, such as WD-40, when tightening stainless steel hardware. Failure to do so can result in "galling" of the stainless steel hardware. Resulting in great difficulty during the tightening & loosening of the hardware.*



Place the “allen bolt” through the rounded “finishing-cup washer” and insert facing upwards going through the splitter with the threads sticking out of the belly-pan. Next, place the “flat washer” around the upward facing bolt, followed by threading the corresponding “nylon lock nut” onto the exposed bolt. Use your 11mm wrench to hold the “nylon lock nut” in place, while tightening the 5/32 allen bolt from the bottom. Reference photo below for a more detailed look:



Step 9: Enjoy Your New LVA Front Splitter!



Tighten all the hardware and reinstall your front bumper + LVA Front Splitter combo!